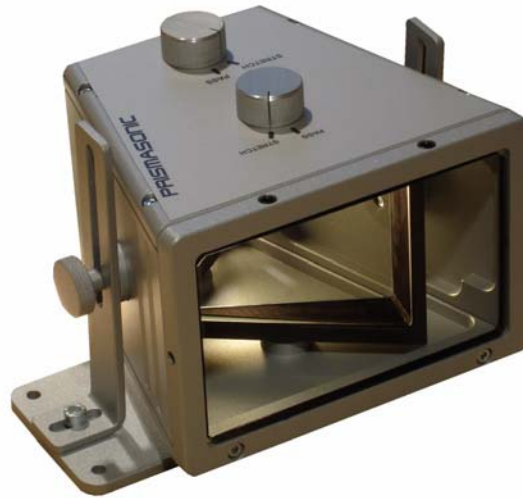


Your Projector's new Best Friend



Installation Instructions:

Carefully remove and unwrap all the contents of box. Referring to the parts list, make sure you have everything needed to proceed with the installation of the lens. If any parts are missing, contact IMAGE Vertriebs GmbH immediately.

Inspect the lens to make sure there are no shipping defects. If you notice a problem with the lens itself, or the lens' mechanical system, contact IMAGE Vertriebs GmbH immediately.

Parts list:

- Lens unit
- Lens mounting bracket (attached to Lens)
- 2 x L-Wrenches (for tuning and adjustment)
- Instruction Manual

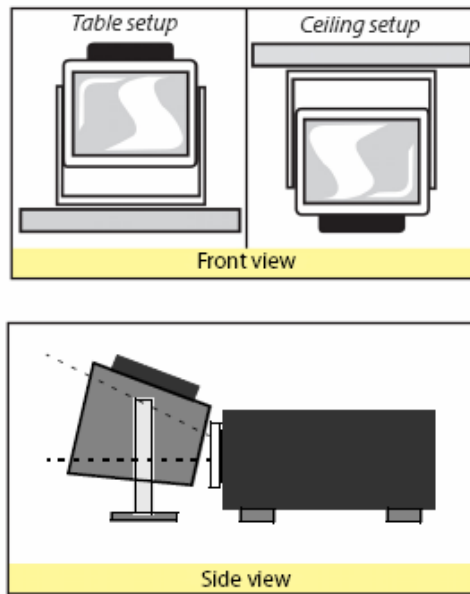
Taking the lens into the use:

1. Remove the lens from the stand, and flip it upside down.
2. Carefully remove the bottom plate of housing by releasing the four screws on the bottom. Now remove the plastic cover coast from both sides of both prisms.
3. Insert the bottom plate back to the housing and tighten the four screws securely.
4. Flip the lens to the right side and attach it back to the stand.
Your lens is now ready for the use!



Installation:

1. Make sure the projector is turned on. It is helpful to have an image completely fills the entire panel of the projector image.
2. With the control knobs pointing towards the ceiling (in a table-mounted setup), or towards the floor (in a ceiling-mounted setup) (see figure below) carefully hold the lens in front of the projector, with the small opening closest to the projector lens and the large opening pointing towards the screen.



3. Make sure the entire projected image fits centered within the two prisms. Lower, raise, and tilt the lens if necessary. When the desired height and angle is reached, secure the lens in place by tightening the arm-extension screws. (See illustrations for correct beam placement through lens).

NOTE: The perfect symmetry for the projected image can only be achieved by tilting the lens to the direction of the beam.

4. Prepare a test presentation to use with your projector, and make sure it is playing when you begin to setup the IMA-lens. It is best to select 2.35:1 aspect movie for the Cinemascope setup, and perform the vertical stretch using the custom-aspect ratio controls of your media player/projector.
5. First move the prisms to the “**pass**” mode using the control knobs until the prisms stop. Make sure that the image is now rectangular and symmetrically in the **centre** of the 2.37:1 screen.

NOTE: IMA-lens introduces some horizontal offset to the image. Offset is to the **left** for table mounted, and to the **right** for ceiling mounted lens. This must be compensated by horizontally shifting the screen in respect to the projector, or if available, using the horizontal lens shift of projector.

6. Turn the control knobs to the “**Wide**” position until the prisms stop again. The tuning can be accomplished by manually adjusting the removable pin stops inside the lens to match your screen perfectly on both sides.

NOTE: Tuning is done to the pin stop screws to where the prisms stop after turning the knobs to the “stretch” position.

7. Adjust focus and picture to achieve the optimum settings in “**Wide**” mode, and note these settings for future reference.

You’re done. Now it’s as simple as turning the control knobs to recall the settings for the IMA-lens, and using the desired settings on your projector and video playback machine/ video scaler/ projector.



Maintenance:

Your IMA-lens was designed to require very minimal cleaning. It is best to only wipe the lens housing with a clean, damp, soft cloth when needed.

The prisms should **ONLY** be cleaned if absolutely necessary and do so with great care...

Cleaning the prisms:

1. Only used optically safe lens-cleaning solutions and a clean, lint-free cloth certified for cleaning of delicate lens material (available at most camera shops).
2. If dust or debris should become trapped in between the prisms, it is possible to open the bottom plate of the housing and clean the prisms from the both sides. Also a small amount of “air in a can” or a hand-operated camera lens air-squeezer can be used (also available at most camera shops) to blow-away this unwanted dust or debris.